

# Crystal Lake Retreat



## Private Lake Front Cottage

Wooded Setting  
2 Bedrooms - down  
Large Loft - up  
1 & 1/2 baths  
1,400 finished sq. ft.  
Wood Burning Stove  
Fully Furnished Kitchen  
(Self Catering)  
Deck & Grill

Tel: 573 243 8397  
Fax: 573 243 8397 \*9  
E-Mail: [info@crystal-lake-retreat.com](mailto:info@crystal-lake-retreat.com)  
Website: [www.crystal-lake-retreat.com](http://www.crystal-lake-retreat.com)

### Near-By Places of Interest:

Southeast Missouri University,  
Cape Girardeau, MO

St. Louis Iron Mountain & Southern Railway

Bollinger Mill, State Historic Site

Old Saint Vincent's Church, Cape Girardeau  
*Built in 1853 in English Gothic style architecture. SEMO University Chamber Orchestra concerts.*

Black Forest Village 2728 County Rd. 638, Cape  
Girardeau, MO, 1870's Old West Town replica.

Flickerwood Arena, Jackson, MO

Trail of Tears State Park, (800-379-2419)

Pee-Wah Trail, 9.2 mile trail, (573-334-1711)

Apple Creek Conservation Area Trails,  
5 mile trail (573-547-4537)

Bent Creek Golf Course, 573-243-6060

Nature Center Campus, 573-290-5218

Bollinger County Museum, Marble Hill, MO

River Ridge Winery, Commerce, MO

Red House Interpretive Center,  
Cape Girardeau, MO – Lewis & Clark

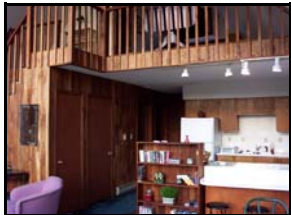
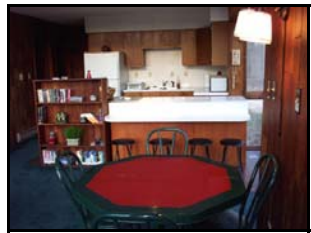
Cape River Heritage Museum,  
Cape Girardeau, MO

Our Lady of the Barren's Church & Old  
Seminary Grounds, Perryville, MO

For more information on the area contact:  
Cape Girardeau Convention & Visitors Bureau  
[capegirardeaucvb.org](http://capegirardeaucvb.org)



## Crystal Lake Retreat



**Mailing Address:**  
Crystal Lake Retreat  
306 Connie Dr.  
Jackson, MO 63755

Phone: (573) 243 8397

Fax: (573) 243 8397 \*9

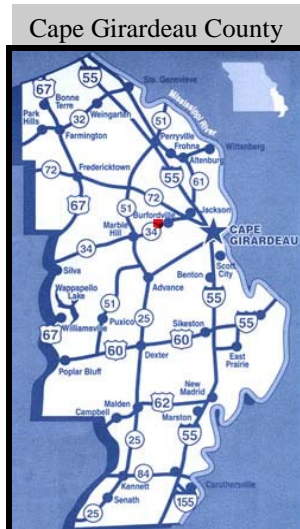
Email: [info@crystal-lake-retreat.com](mailto:info@crystal-lake-retreat.com)

Website: [www.crystal-lake-retreat.com](http://www.crystal-lake-retreat.com)

## Private retreat:

Located 125 miles South of St. Louis  
and 180 miles North of Memphis,  
off of I-55

Ten miles from Jackson, MO and  
20 miles from Cape Girardeau, MO.



**Activities:**  
Fishing  
Hiking Trails  
Picnics  
Cook Outs  
Bird Watching  
&  
Specifically -  
Rest & Relaxation!

## Rejuvenate your spirit in the Glory of Nature



Fishing, 5.3 Acres Stocked Lake

- Fishing Dock
- Paddle Boat
- Camp-Fire Site by Lake
  - Picnic Area
  - Sits on 150 Acres
- Seasonal Mushroom Hunting

Only two cottage on site.  
If more than 6 in your group ask about the  
possibility of renting the 2nd cottage.

**Brown Cottage: 2 adults** \$170.00/night  
(Maximum 6 guests)

**Each additional guest** \$15.00/night

Maximum Number of Guest = 6

Check in 3:00 PM - Check out 12:00 Noon

Deposits:

- \$50.00 refundable damage deposit with reservation
- One night's deposit with reservation
- Four or more days require advance first & last night's deposit
- Advance deposit refundable with 3 weeks notice

**Reservations are confirmed upon receipt of deposits & signed waivers for all guests, including children**

Weekend reservations require a 2 night stay

Well supervised children are welcome

As a courtesy to future guests no pets inside cabin

As a courtesy to future guests no smoking in cabin

Fishing for registered guests only

(Do not supply life jackets)

Ask about hunting privileges

**Phone: (573) 243 8397**

**Fax: (573) 243 8397 \*9**

**Email: [info@crystal-lake-retreat.com](mailto:info@crystal-lake-retreat.com)**

**Website: [www.crystal-lake-retreat.com](http://www.crystal-lake-retreat.com)**